

OS-IS[®] Ocean Seismic Integrated Solutions

ABOUT US

OS-IS[®] is developed and designed in collaboration with AGI srl, MARIS scarl and INGV



Our Partner

Together with our partner, we can provide complete solutions for monitoring & weather forecast

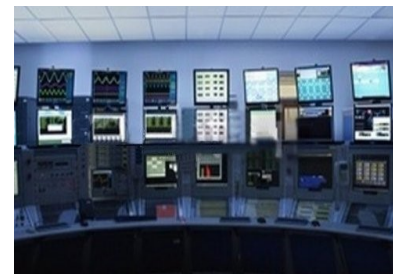
What is OS-IS[®]?

- Is a new in-land method to monitor the sea waves
- It measures the most important wave parameters: significant height & period
- Essential part for the integrated weather monitoring and forecast solutions



How does it work?

- It is based on accelerometers installed inland
- The accelerometers measure the micro-seismic signals generated by the sea waves
- OS-IS[®] special algorithms evaluate the waves parameters from the micro-seismic measurements to provide real time sea state parameters
- OS-IS[®] can work standalone or integrated with a dedicated weather model for a complete monitoring/forecasting solution

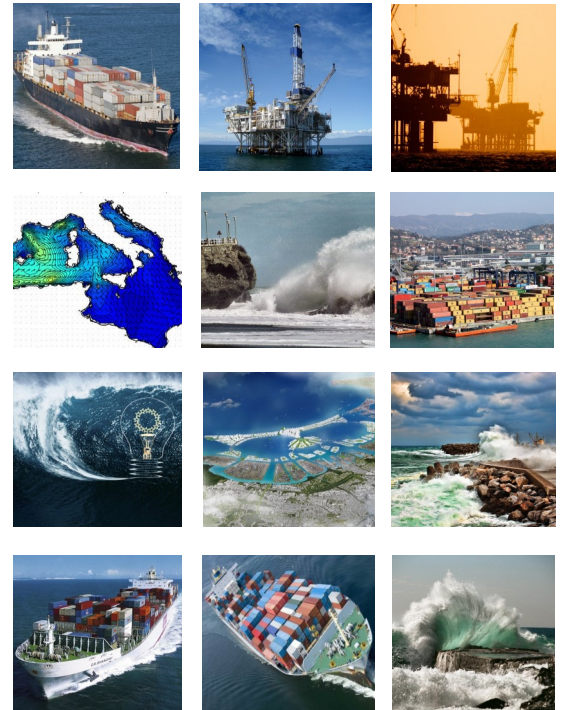


Why OS-IS®?

- **Convenient location**
 - * Inside regular building
- **Affordability**
 - * Low Price
 - * Low maintenance costs
- **Reliability**
 - * Protected by the hosting building
 - * Exploit the infrastructures of the building (Network and Power Supply)
 - * Easy to reach and maintain
 - * Very high uptime
 - * Fault alert system
- **Easy to install**
 - * No interdiction areas required
 - * No authorities permissions
- **High resolution data**
 - * High sampling frequency (10 min.)
- **Real-time monitoring**
 - * Minimal latency time (few min.)
- **Database**
 - * Data collection and storage
 - * Web portal and data accessibility
- **Complete monitoring**
 - * Integration with weather station
 - * Integration with buoy monitoring system
- **Weather forecasts**
 - * Long (up-to 72 hr) term forecasts (with weather model only)

Problems to be solved

- **Weather forecasts**
 - * OS-IS® a fundamental validation for the sea forecast models
- **Safety in the sea**
 - * Shipping & transportation companies;
 - * Oil platform & seabed mining;
 - * Activities in ports & coastal areas;
 - * Government operations (e.g. Triton of Forex ex. Mare Nostrum);
 - * Fishing
- **Effective planning**
 - * Coastal area management (e.g. port infrastructure and engineering, sea walls, etc.);
 - * Ocean energy (exploit the potential of waves, tides, etc.);
 - * Coastal tourism;
 - * Aquaculture
- **Studies and research**
 - * Climatic changes;
 - * Coast erosion;
 - * Blue biotechnology.



Successful projects

OS-IS® monitoring system, together with a forecast model, has been already implemented in the EU project “Vento, Porti e Mare”



DEMONSTRATION SYSTEM

www.ondedimare.it

CONTACTS

For more information on any of our products or services please visit us on the Web at:

www.agi-tech.com

www.maris-ricerca.eu

SERVICES AVAILABLE

- | | |
|------------------------|---------------------|
| Technical Support | Application Support |
| Installation and Setup | Hardware Support |
| Maintenance | Guaranteed Warranty |